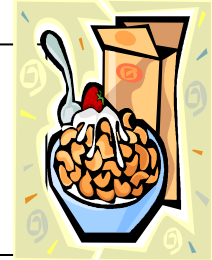
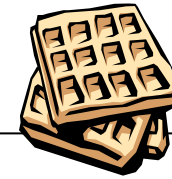
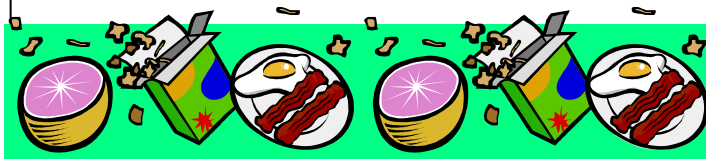


November 2009

LASER

Breakfast Menu



-2-
VARIETY OF CEREAL
OR YOGURT
BUTTERED TOAST
ORANGE JUICE
CHOICE OF MILK

-3-
BUTTERMILK BISCUIT
SCRAMBLED EGGS
VARIETY OF CEREAL
ORANGE JUICE
CHOICE OF MILK



-4-
POTATO & EGG TACO
CEREAL W/TOAST
ORANGE JUICE
CHOICE OF MILK



-5-
BLUEBERRY SAUSAGE WRAP
CEREAL W/TOAST
ORANGE JUICE
CHOICE OF MILK

-6-
PANCAKES W/SYRUP
SAUSAGE PATTY
VARIETY OF CEREAL
ORANGE JUICE
CHOICE OF MILK

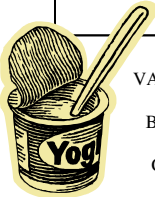
-9-
VARIETY OF CEREAL
OR YOGURT
STRAWBERRY POP TART
ORANGE JUICE
CHOICE OF MILK

-10-
HAM/EGG/CHEESE TACO
CEREAL W/TOAST
ORANGE JUICE
CHOICE OF MILK

-11-
STAFF DEVELOPMENT

-12-
FRENCH TOAST
SAUSAGE PATTY
VARIETY OF CEREAL
ORANGE JUICE
CHOICE OF MILK

-13-
HAM/EGG/CHEESE CROISSANT
CEREAL W/TOAST
ORANGE JUICE
CHOICE OF MILK



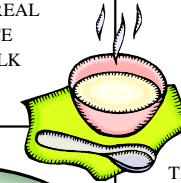
-16-
VARIETY OF CEREAL
OR YOGURT
BUTTERED TOAST
ORANGE JUICE
CHOICE OF MILK

-17-
SAUSAGE BISCUIT
VARIETY OF CEREAL
ORANGE JUICE
CHOICE OF MILK



-18-
PIG IN A BLANKET
CEREAL W/TOAST
ORANGE JUICE
CHOICE OF MILK

-19-
SCRAMBLED EGGS W/SALSA
BUTTERED TOAST W/JELLY
VARIETY OF CEREAL
ORANGE JUICE
CHOICE OF MILK



-20-
BREAKFAST PIZZA
CEREAL W/TOAST
ORANGE JUICE
CHOICE OF MILK



-23-
THANKSGIVING HOLIDAY

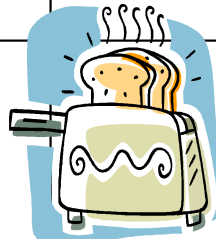
-24-
THANKSGIVING HOLIDAY

-25-
THANKSGIVING HOLIDAY

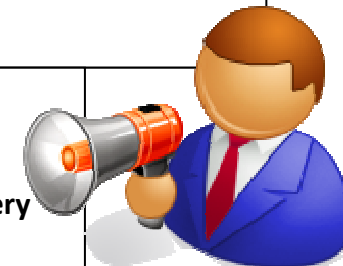


-27-
THANKSGIVING HOLIDAY

-30-
VARIETY OF CEREAL
OR YOGURT
BUTTERED TOAST
ORANGE JUICE
CHOICE OF MILK



We have an Announcement...
All Parents please be advised that ALL Kingsville I.S.D. Students are allowed to come and Enjoy Free Breakfast every morning!! Please take advantage of this option!!



"In accordance with Federal law and United States Department of Agriculture policy, this institution is prohibited from discriminating on the basis of race, color, national origin, sex, age or disability. To file a complaint of discrimination, write U.S. Department of Agriculture, Director, Office of Adjudication and Compliance, 1400 Independence Avenue, SW, Washington, DC 20250-9410 or call (800) 795-3272 (voice) or (202) 720-6382 (TTY). USDA is an equal opportunity provider and employer."

Menu is subject to change without notice due to availability of product.